

PONY CLUB



Saddlery Mini Achievement Badge Workbook



Objectives To be able to show and name certain parts of the saddle and bridle

- Key points
- Show and name parts of the saddle
 - Pommel, stirrups, girth
 - Show and name parts of the bridle
 - Noseband, reins

This workbook is an introduction to the subject that it covers. As it is addressed primarily to young children, it is important that the instructor must be prepared to demonstrate the subject practically, and allow the member to practice the skills as frequently as required. It is highly recommended that the parent or the instructor read or explain the contents of the workbook to the child as it cannot be assumed that the child is able to read the information or instructions sufficiently well to achieve understanding.

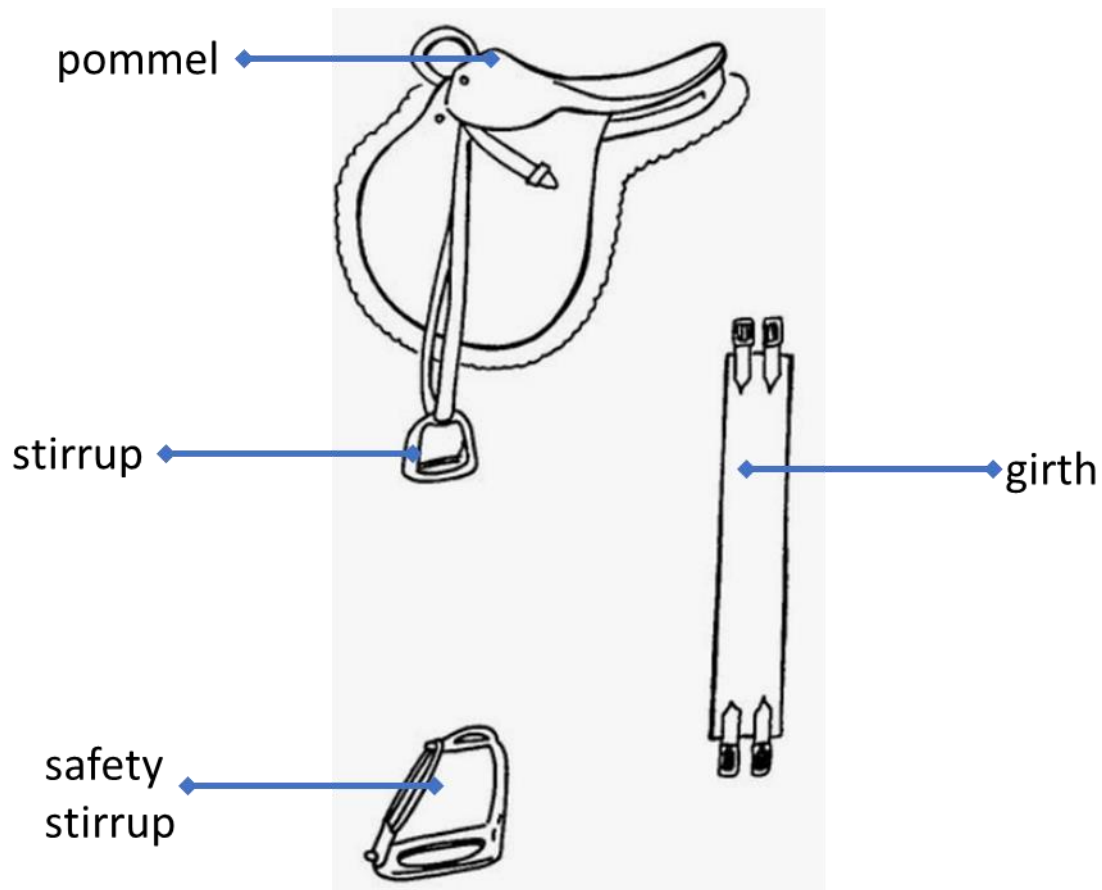
Name

Branch

Saddlery is often referred to as 'tack' and is very important if you want to ride a pony safely and comfortably.

Saddle

- The saddle helps both you and your pony to be comfortable when you ride
- The saddle helps you to sit in the correct position when riding



Pommel - the front part of the saddle.

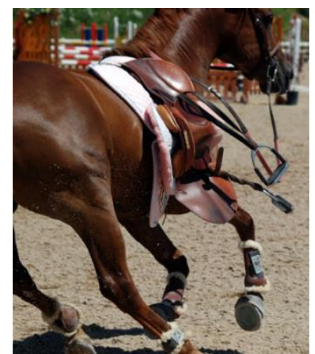
Stirrups - These support the rider's feet so that they don't just hang down on either side of the saddle. Stirrups are made up of stirrup leathers and stirrup irons.

Girth - The girth is very important as it holds the saddle in place on the pony's' back and stops it from falling off.

Girth Safety

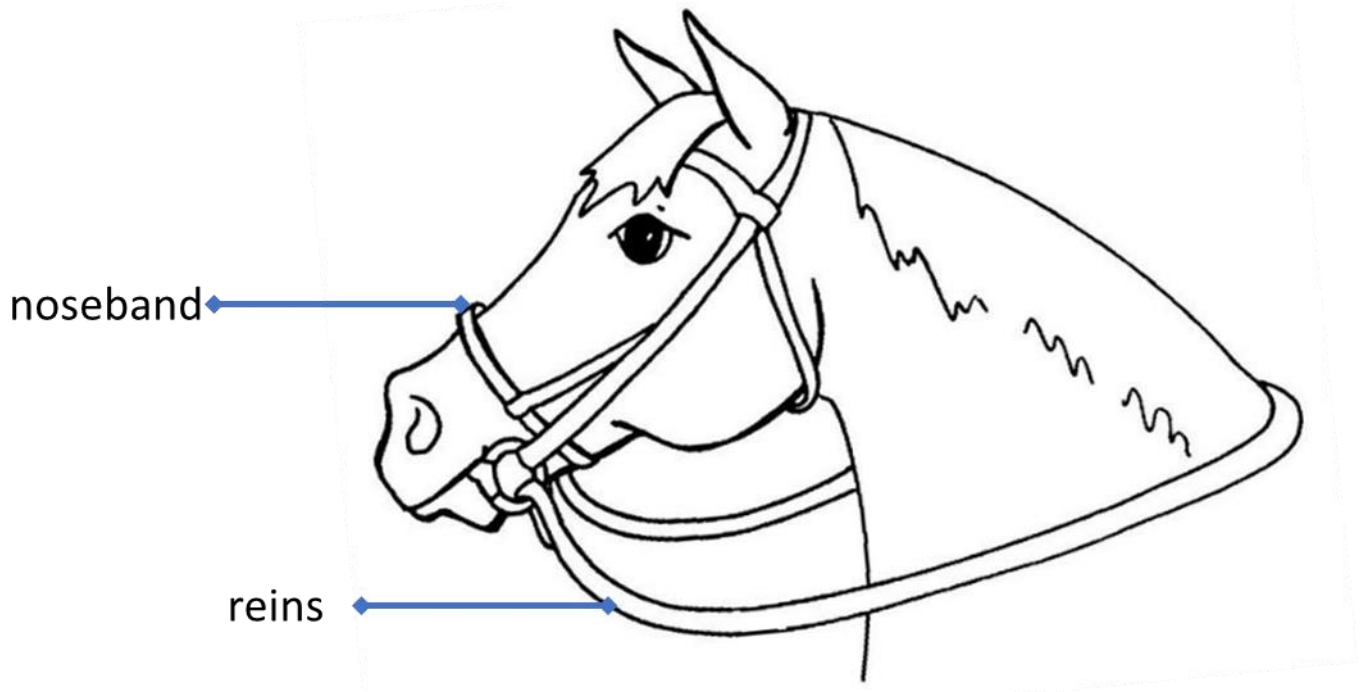
Before you get on your pony, check that the girth is tight enough around your pony's tummy.

When you are on the pony, check again that the girth is tight enough.



Bridle

A bridle is the headgear that you put onto a pony which helps you to steer or guide the pony's head.



The **noseband** encircles the nose of the pony.

Reins are the long leather straps which are attached to the bit and that reach to your hands so that you can hold them comfortably. Reins help the rider to direct the pony's head. Reins are used for steering and stopping the pony.

Test yourself

1. On the bridle, can you point to the noseband, and the reins?



2. On the saddle, can you point out the girth, the stirrup and the pommel?



3. Look at the two pictures of saddles below. One picture shows 'safe' stirrups and the other shows 'unsafe' stirrups when we are not on our pony. Put a big red **X** next to the 'unsafe' stirrups and a big green tick **✓** next to the 'safe' stirrups. Why do you think we need to make sure our stirrups are always 'safe'?

